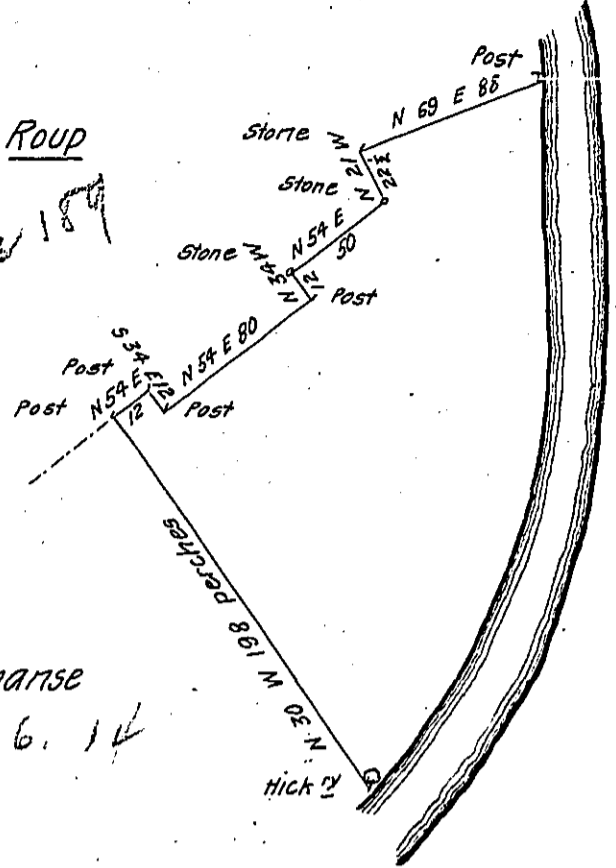


Peter Roup

Page 189



George Clyhanse
O. 36. 14

By Virtue of a Warrant from the Hon^{ble} the Proprietaries dated the 3^d day of October 1737 Surveyed to George Rope the above described Tract of Land Situate in the County of Bucks on the River Delaware about 4 miles above Durham Iron Works Beginning at a Hickory Tree on the ^{Bank of the} Said River thence by Land of George Clyhanse N 30 W 198 perches to a post thence Land of Peter Roup The ~~Six~~^{Seven} following Courses & distances Viz N 54 E ¹² perches 534 E 12 perches N 54 E 80 perches N 34 W 12 perches N 54 E 50 perches N 21 W 22 1/2 perches and N 69 E 88 perches to a post on the Bank of the said Rive- Delaware thence down the same the several courses thereof to the place of Beginn^g containing 168 Acres and Allowance &c^a

Nich^o Scull -

IN TESTIMONY that the above is a copy of the original remaining on file in the Department of Internal Affairs of Pennsylvania, made conformably to an Act of Assembly approved the 16th day of February, 1833, I have hereunto set my Hand and caused the Seal of said Department to be affixed at Harrisburg, this first day of June 1906

Loach D. Brown
Secretary of Internal Affairs.